



NATIONAL CONFERENCE
RECENT TRENDS IN
MATHEMATICAL BIOLOGY THEORY, METHODS & APPLICATIONS

20 - 22 JULY 2023



PARTIALLY SUPPORTED BY DST SERB, INDIA



GPS Map Camera

Puttaparthy, AP, India

Puttaparthy Main Road, Puttaparthy, Puttaparthy,
515134, AP, India

Lat 14.162012, Long 77.812239

07/22/2023 10:31 AM GMT+05:30

Note : Captured by GPS Map Camera







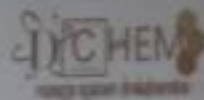








Designing Polymer Nanocomposites for Next-Generation Biomedical Devices and other Applications using Multiscale Molecular Dynamics Simulations

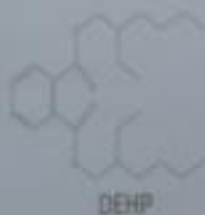


Dr. V N Ravi Kishore Vutukuri
Department of Chemistry
IIT Bombay Institute of Higher Learning

Introduction

Plasticizers (like DEHP) present in the blood storage bags are carcinogenic and have been banned in Europe over endocrine disrupting potential concerns.*

But, DEHP plasticizer also has the property to reduce hemolysis.....indicating longer shelf life. Look for alternative materials which can increase the shelf life of blood without toxicity concerns.



Why Polymer Nanocomposites ?

- Light weight and high tunability
- Characteristics which encompass both colloidal science and polymer features
- Nanoparticles with large surface area to volume ratio have unexpected physical, chemical and optical properties



**Stabilized Variational Multiscale Sub-Grid Finite Element
Analysis Transport Model with Application to
Hemodynamics**

B. V. Rathish Kumar

Jointly with

Manisha, Dipak, Anil

IIT Kanpur





stand cancer cell
therapy resistance

Engineering
Bengaluru, India

& Applications

BYE
DIE
AL

Mathematical
Applications

SSSIHL | July 20



SC

100 Curves (200)

SD

100 Curves (200)

G

100 Curves (200)

GK

100 Curves (200)

DP

100 Curves (200)

DR

100 Curves (200)

PA

100 Curves (200)

AK

100 Curves (200)

FT

100 Curves (200)



2023

NATIONAL CONFERENCE ON

Recent Trends in
Mathematical Biology
Theory, Methods & Applications

Venue: Prasadji Memorial Campus, UACOM

Bifurcations, Triple and Quadruple attractors, and Dispersed
Periodic Structures in a Discrete-time Population System



Bapan

Differential Equations, Modelling
Department
Indian Institute of Technology

ODELS AND

Methods and

lia





Participant 1 | Muted | Video Off

Participant 2 | Muted | Video Off

Participant 3 | Muted | Video Off

Participant 4 | Muted | Video Off

Participant 5 | Muted | Video Off

Participant 6 | Muted | Video Off

Participant 7 | Muted | Video Off

Participant 8 | Muted | Video Off





SC

SI

G

U

DP

D

PA

A

FT

N

SP



Participant: [Name]



[Name]



[Name]



[Name]

1/1



1. The first step in the process of...
2. The second step is to...
3. The third step is to...
4. The fourth step is to...
5. The fifth step is to...







